

ATTACHMENT 2-A: HISTORIC AERIAL MAPS



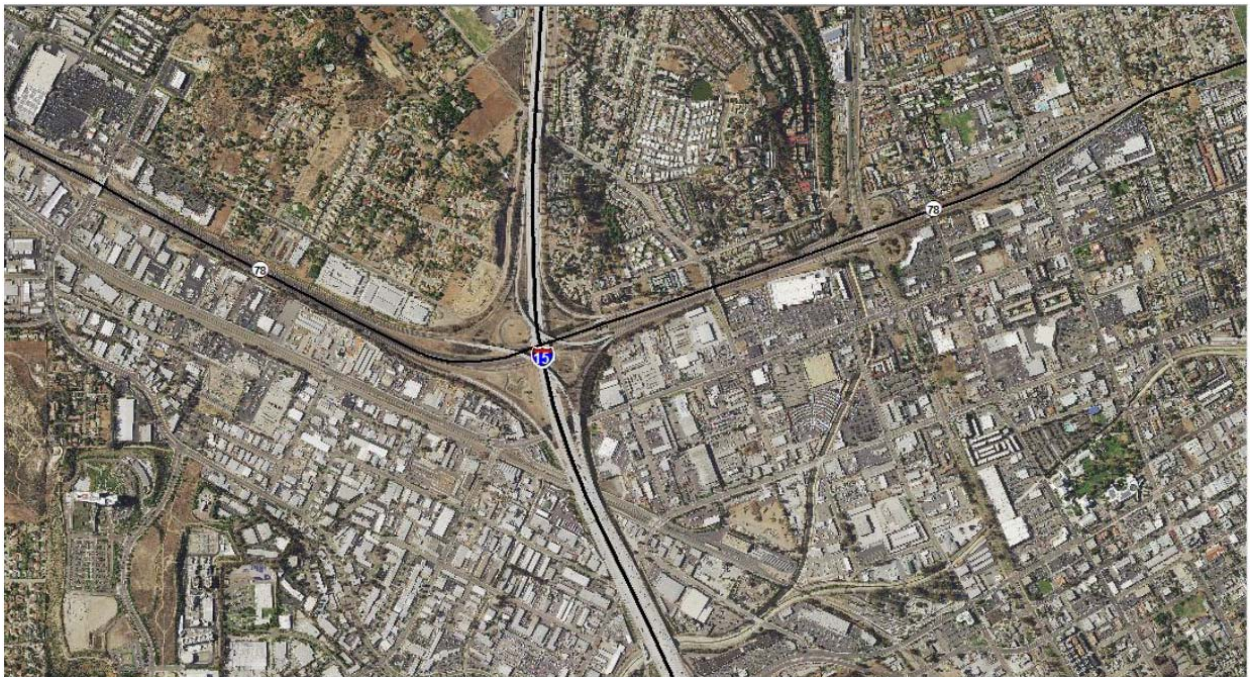
Photograph 1: Interstate (I-) 15 and State Route (SR-) 78 in Escondido in the 1940s.



Photograph 2: I-15 and SR-78 in Escondido in the 1960s.



Photograph 3: I-15 and SR-78 in Escondido in the 1990s.



Photograph 4: I-15 and SR-78 in Escondido in 2014.



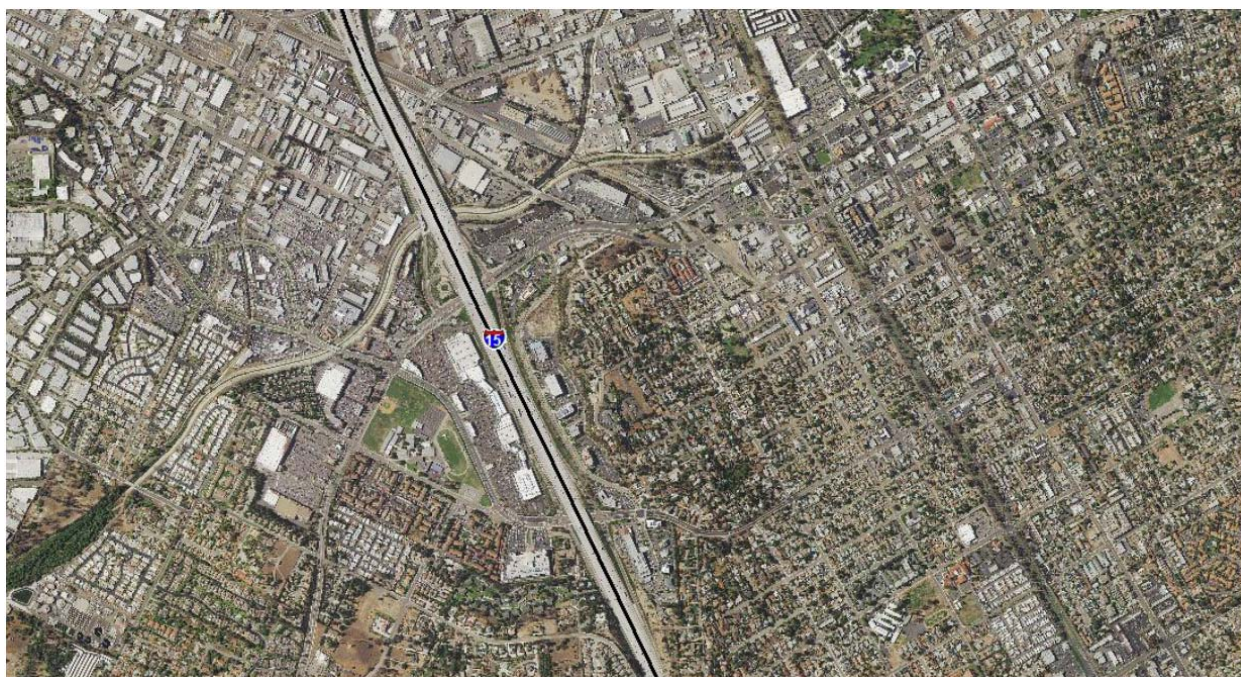
Photograph 5: I-15 and Del Dios Highway in Escondido in the 1940s.



Photograph 6: I-15 and Del Dios Highway in Escondido in the 1960s.



Photograph 7: I-15 and Del Dios Highway in Escondido in the 1990s.



Photograph 8: I-15 and Del Dios Highway in Escondido in 2014.



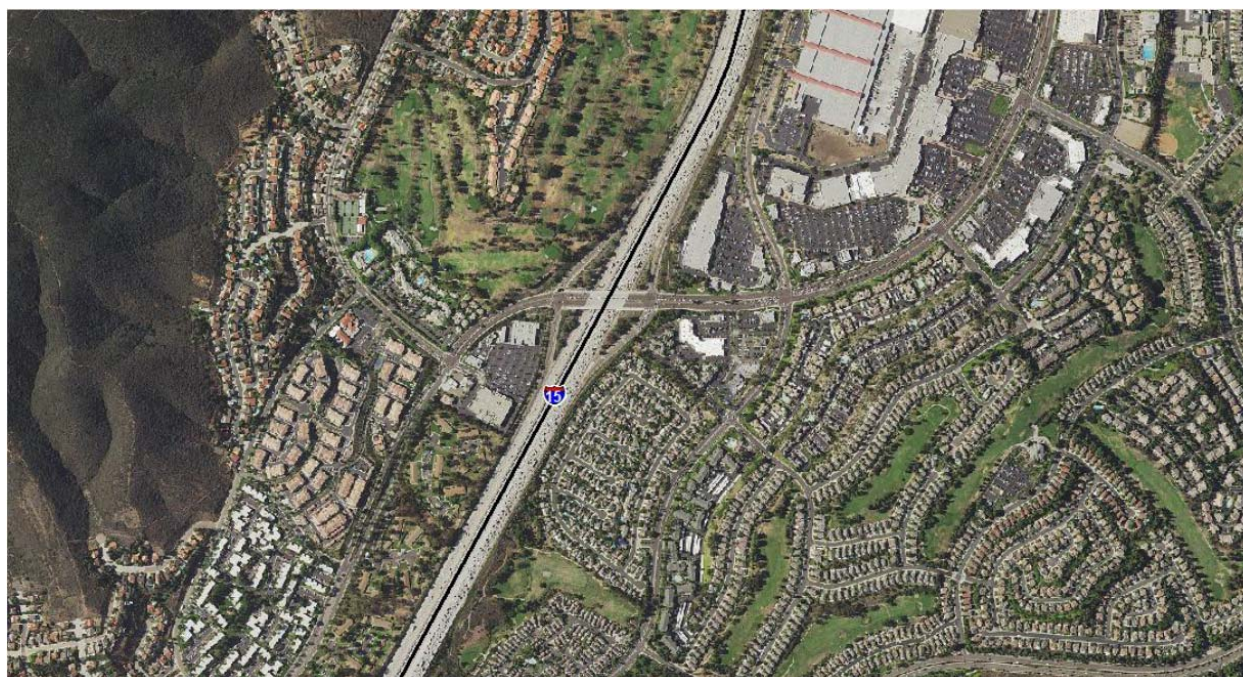
Photograph 9: I-15 and Carmel Mountain in San Diego/Carmel Mountain Ranch in the 1940s.



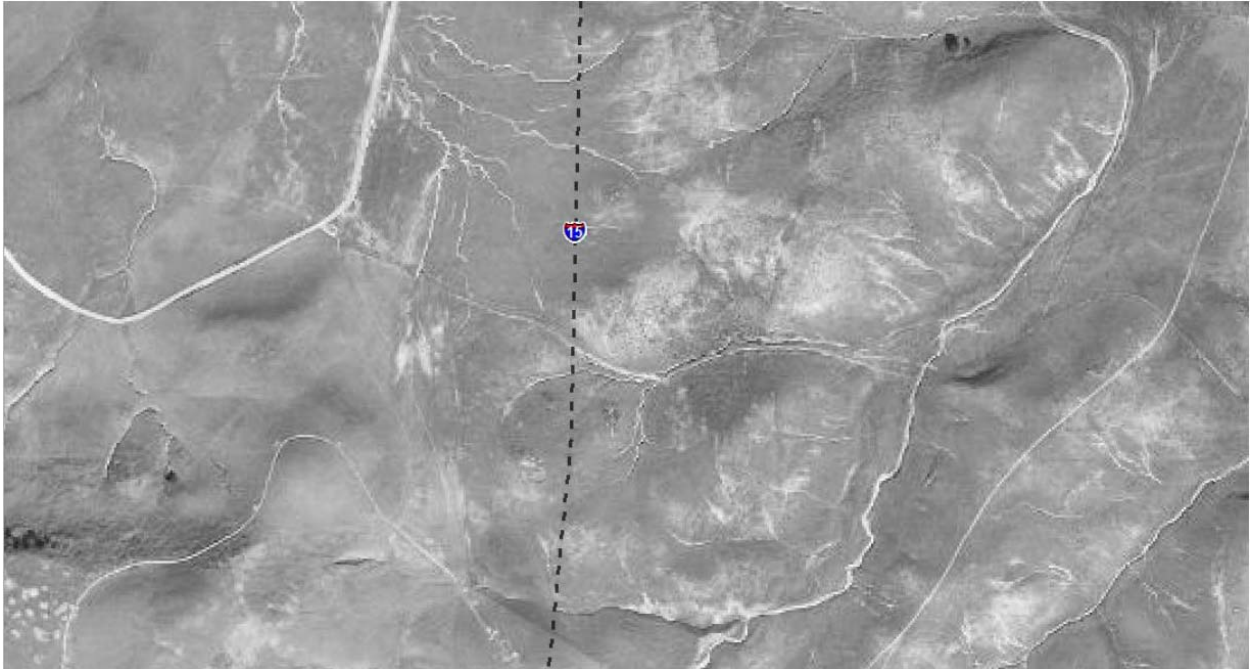
Photograph 10: I-15 and Carmel Mountain in San Diego/Carmel Mountain Ranch in the 1960s.



Photograph 11: I-15 and Carmel Mountain in San Diego/Carmel Mountain Ranch in the 1990s.



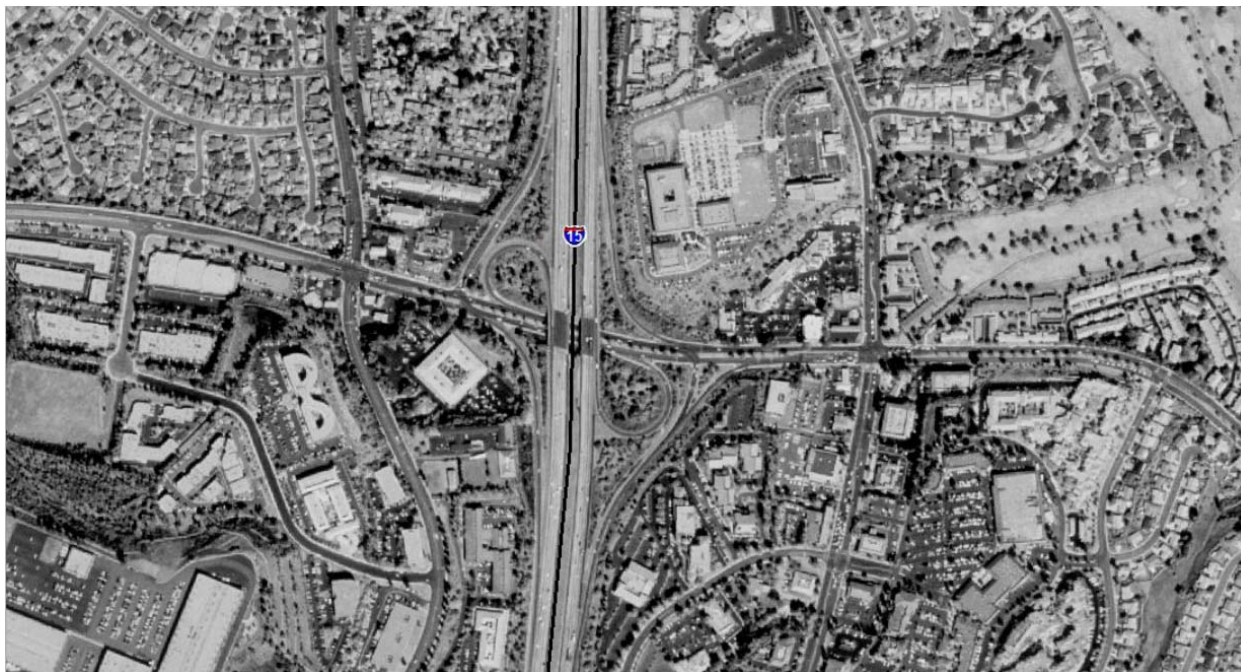
Photograph 12: I-15 and Carmel Mountain in San Diego/Carmel Mountain Ranch in 2014.



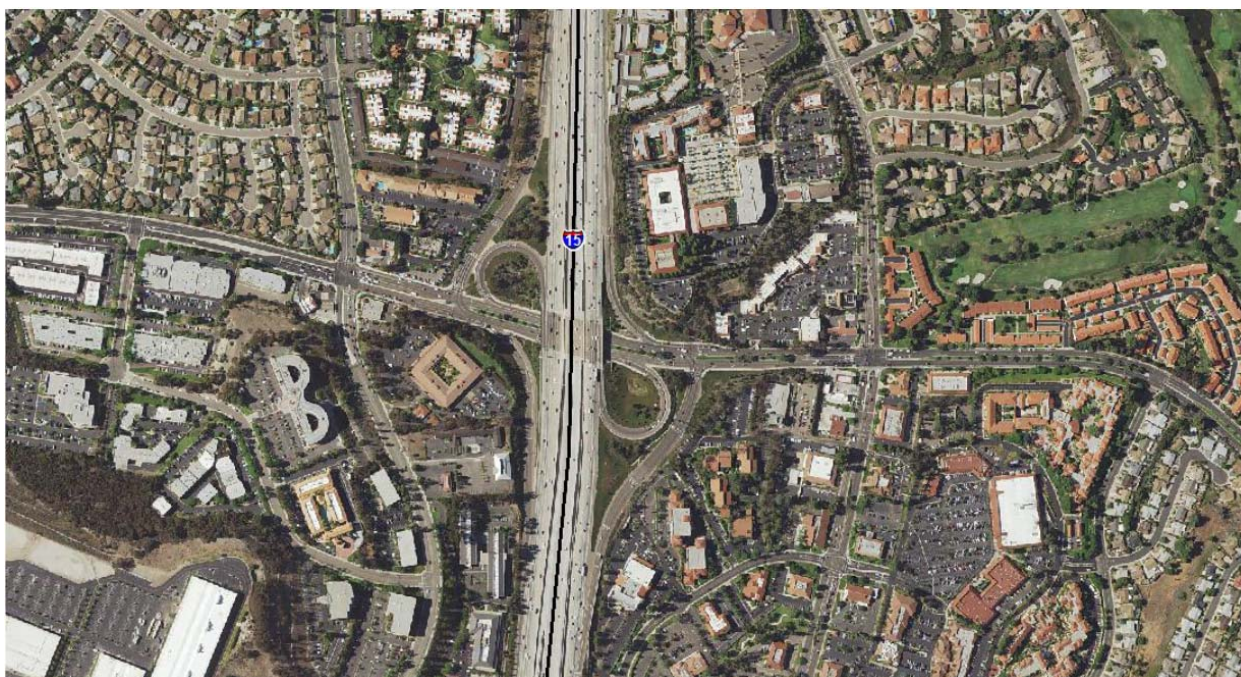
Photograph 13: I-15 and Rancho Bernardo in San Diego in the 1940s.



Photograph 14: I-15 and Rancho Bernardo in San Diego in the 1960s.



Photograph 15: I-15 and Rancho Bernardo in San Diego in the 1990s.



Photograph 16: I-15 and Rancho Bernardo in San Diego in 2014.



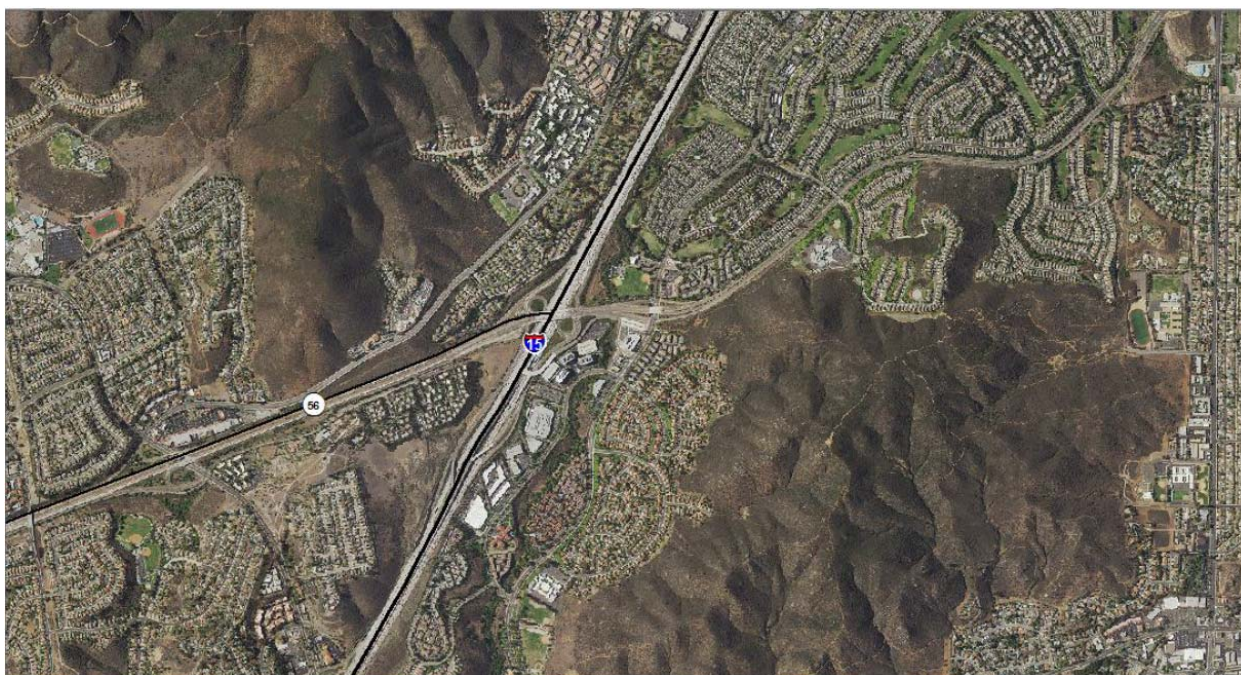
Photograph 17: I-15 and SR-56 in San Diego in the 1940s.



Photograph 18: I-15 and SR-56 in San Diego in the 1960s.



Photograph 19: I-15 and SR-56 in San Diego in the 1990s.



Photograph 20: I-15 and SR-56 in San Diego in 2014.